

Nomadic Communications



UNIVERSITÀ DEGLI STUDI DI TRENTO

Renato Lo Cigno

LoCigno@disi.unitn.it - Tel: 2026

Alessandro Villani

avillani@science.unitn.it – Tel: 1592

Dipartimento di Ingegneria e Scienza dell'Informazione

Home Page: <http://isi.unitn.it/locigno/index.php/teaching-duties/nomadic-communications>

Copyright

Quest'opera è protetta dalla licenza:

Creative Commons

Attribuzione-Non commerciale-Non opere derivate

2.5 Italia License

Per i dettagli, consultare

<http://creativecommons.org/licenses/by-nc-nd/2.5/it/>





What do you find on the web site

- Exam Rules
- Exam Details ... should be on ESSE3, but ...
- Generic (useful) information
- Teaching Material: normally posted at least the day before the lesson
- Additional Material and links
- Laboratories groups, rules, description and hints
- News, Bulletin, How to find and meet me and Alessandro, etc.
- ...

The web site is work in progress and updated frequently
(that's at least my intention)

Please don't blame ME if you didn't read the last news 😊



Program

- **Why “Nomadic”**

- Mobile vs. nomadic
- Cellular vs. HotSpot
- Local wireless communications

- **Some rehearsal**

- Access Control Protocols
- Protocols and architectures
- Services and primitives
- IEEE 802 project
- Nomadic communications positioning



Program

■ **WLAN**

- 802.11 Standard
- 802.11 MAC
- 802.11b/g/a/h PHY
- QoS and Differentiation enhancement: 802.11e
- Mesh networks: 802.11s & other protocols
- Other extensions: 802.11f/n/p/...



Program

- **Ad-Hoc Networks**
 - Stand-Alone WLANs
 - Routing and multi-hop in Ad-Hoc networks
- **Personal Area Networks and WSNs**
(probably little this year)
 - Bluetooth
 - 802.15 (ZigBee)
 - Sensor and Actuator Networks
- **Vehicular Networks**
(probably quite a lot this year)
 - Problems and scenarios
 - Specific issues
 - 802.11p and WAVE



Laboratories

- Intended to be **experimental** labs
 - Hands on the material (hardware/software)
 - Configuration of devices
 - **Measurements** and results interpretation
- Centered on 802.11
 - We have material and experience
 - Devices are easy to configure and use
 - They are not meant to cover all the course material
 - They are not meant to give you **notions** but a **working methodology**
- **More on Labs Later**



Why Nomadic

- Cellular Networks widely diffused
 - Expensive
 - Omnipresent
 - Still voice/small terminal oriented
- The Internet *while around* requires
 - Different (faster/cheaper) network
 - Don't need to use it while *moving*
 - Want to have it "*around*" but not necessarily *everywhere*



A Fundamental Difference

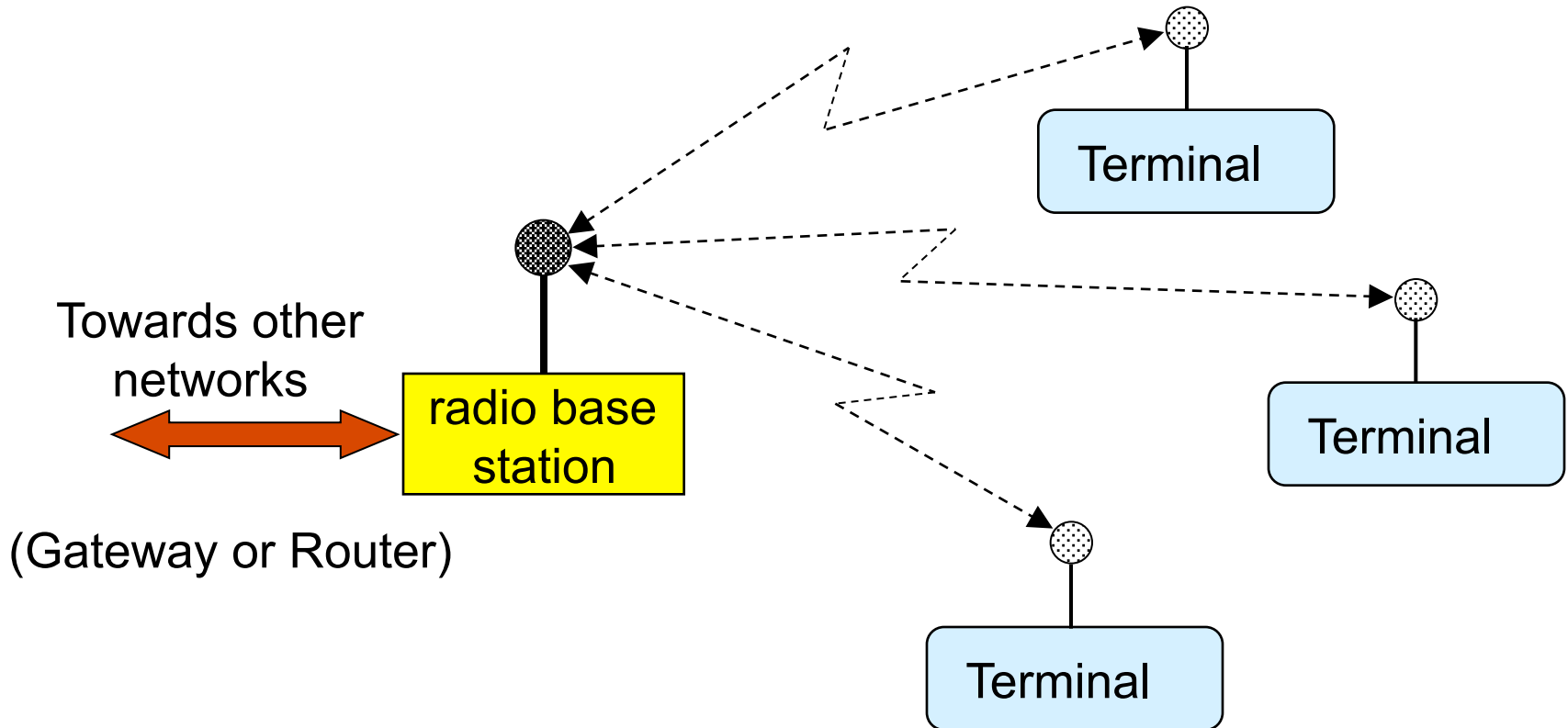
Wireless Network

(sub)net where the access is on a tetherless channel, can be your cordless at home!

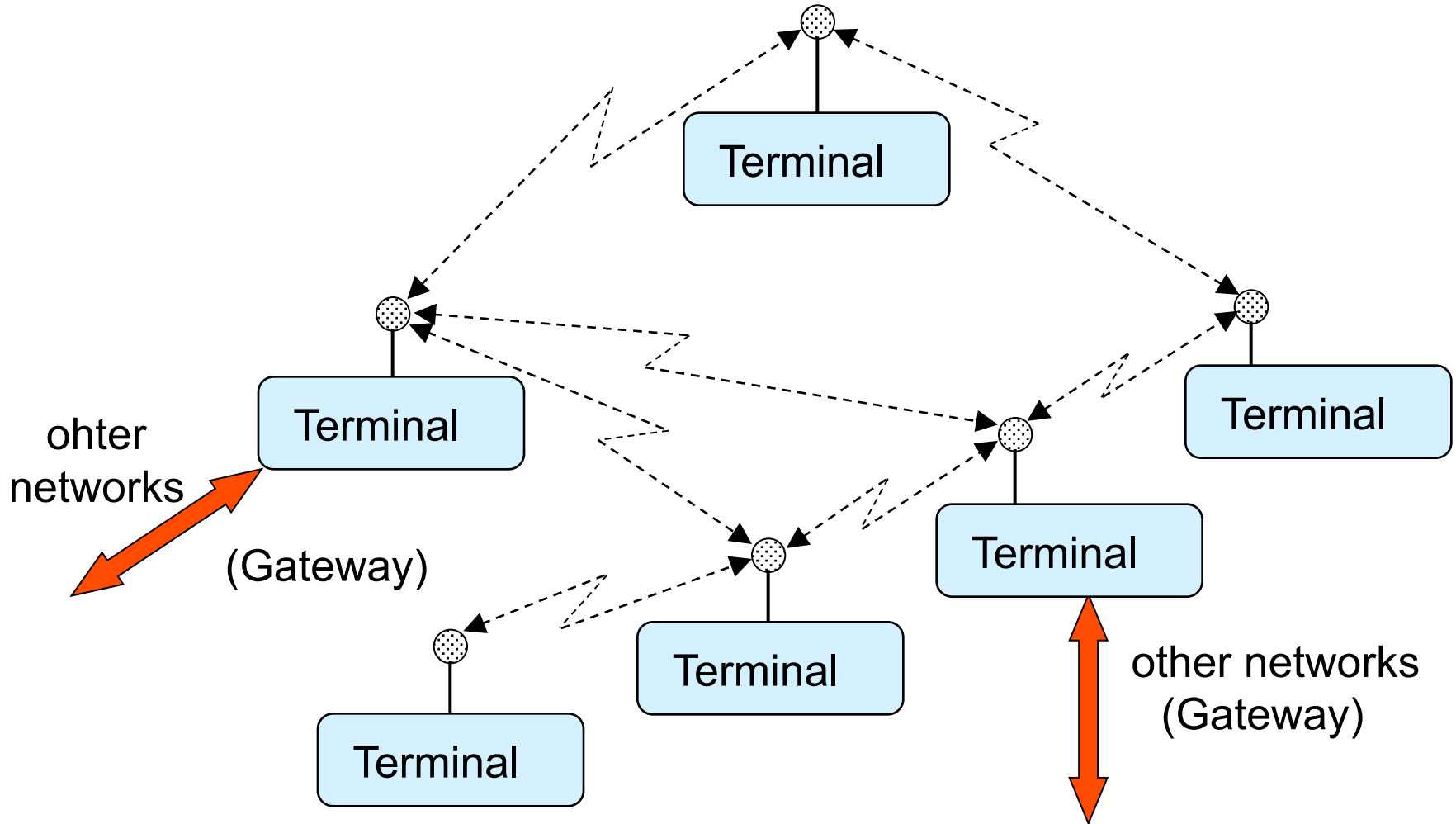
Cellular Network

a global network where the topological coverage is obtained with a set of adjacent or overlapping areas called *cells*. The mobile terminal (user) can move from one cell to the other keeping the communication seamlessly active

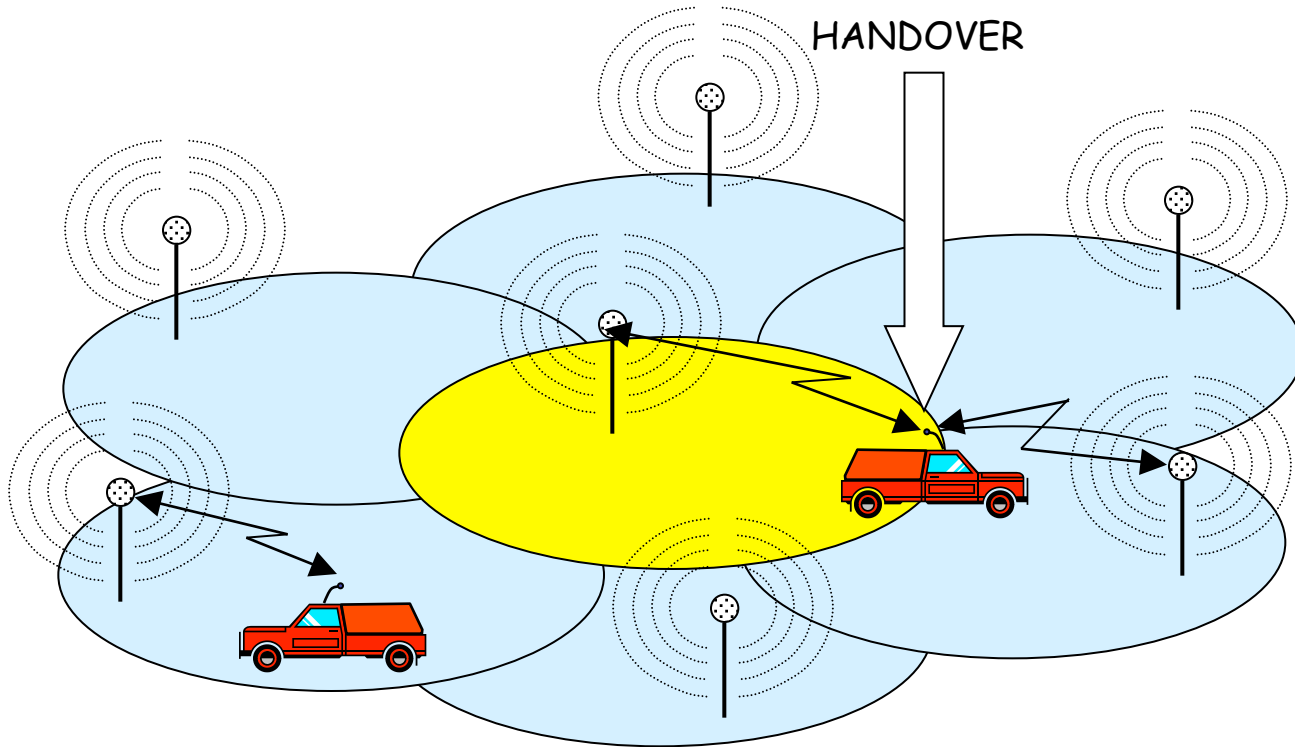
Wireless Network with a Fixed Point of Access



Ad-Hoc Self Configuring Wireless Network



Cellular Network





Wireless Local Access

- Nomadic communications are characterized by a first (second, third ...) wireless hop, then a connection to the global network
- Short range radio
- Normally shared medium
- Generally Best-Effort
- Need for authentication, identification, authorization (or not??)
- Warchalking is not sustainable (at least for HotSpots and professional support)



Access Protocol Rehearsal

what you *already know* but don't *remember*
what you *should know* but are not *aware of*





Classification of LAN MAC protocols

- 3 types
 - Contention or Random Access (Aloha, CSMA/CD, Ethernet)
 - Ordered Access (Token Ring, Token Bus, FDDI)
 - Slotted with reservation (DQDB, Res-Aloha)
- Evaluation/Performance Parameters
 - Throughput (capacity and carried traffic)
 - Fairness
 - Delay (access, propagation, delivery)
 - Topology, Resilience, Network dimension, Number of Stations,

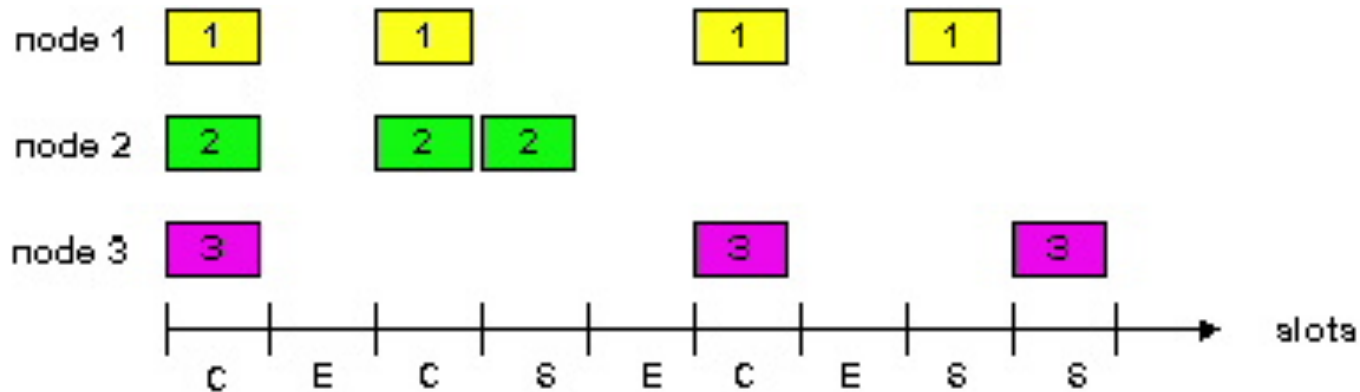


Random Access Protocols

- A node in transmit a packet
 - At line speed R
 - without coordination with others
- If more than one node transmit at the same time..... \Rightarrow collision
- Random Access (or contention based) MAC protocols specify:
 - How to randomize the initial access
 - How to recognize a collision
 - How to retransmit the packet after a collision

Slotted Aloha

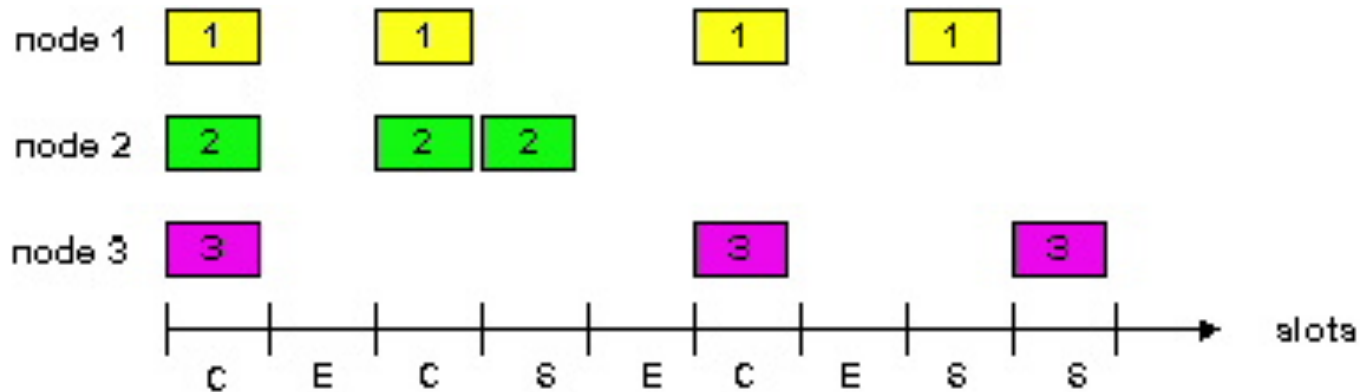
- Time is divided in equal length slots
- Nodes transmit at the beginning of the slot only
- In case of collision retransmit either with probability p or after a random delay till success



Success (S), Collision (C), Empty (E) slots

Slotted Aloha: homework

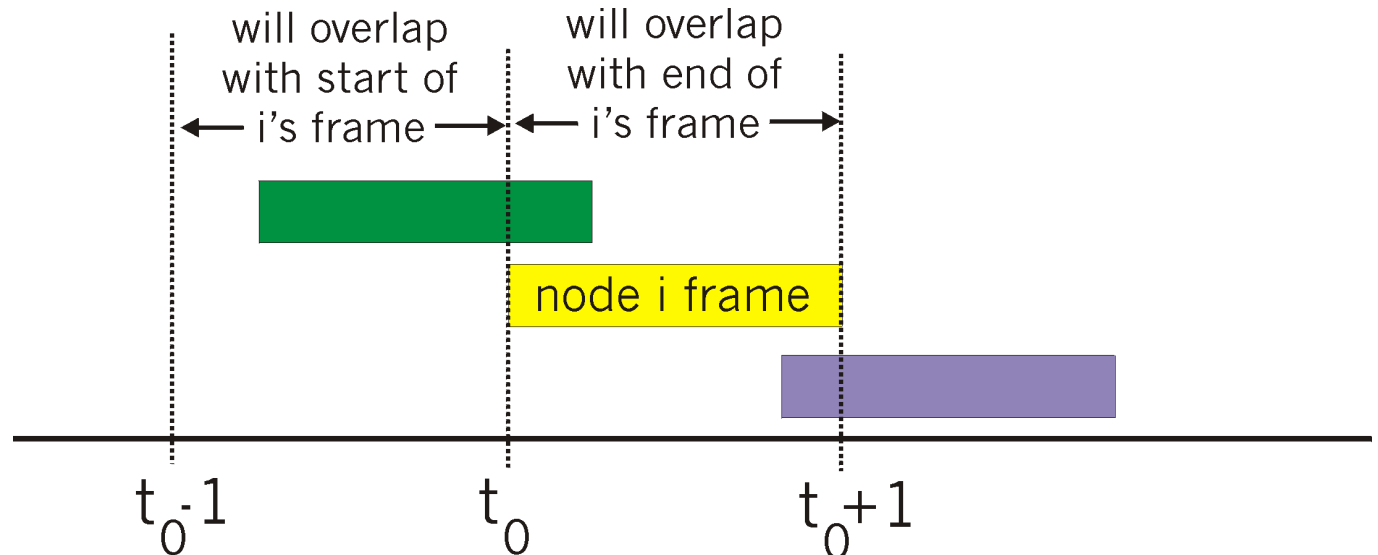
- Compute collision probability in case of Poisson Arrivals
- Compare the p-retransmission policy with the delayed retransmission one
 - are they equal? in what conditions?



Success (S), Collision (C), Empty (E) slots

ALOHA

- Simpler, no slots no synchronization
- Transmission at any time, retransmission too, only random delay possible after collisions
- Collision probability is increased
 - yellow packet collides with other packets in $[t_0-1, t_0+1]$





Comments

- Simple protocols
- Throughput is very limited due to collisions
 - with Poisson arrival hypotheses the maximum efficiency is
 - 18% ALOHA
 - 37% SLOTTED ALOHA
 - With other traffic may be larger/smaller
- Unstable protocols (throughput goes to zero at high loads)!!!
- At low loads access delay is close to zero
- Access delay is not guaranteed nor bounded!!

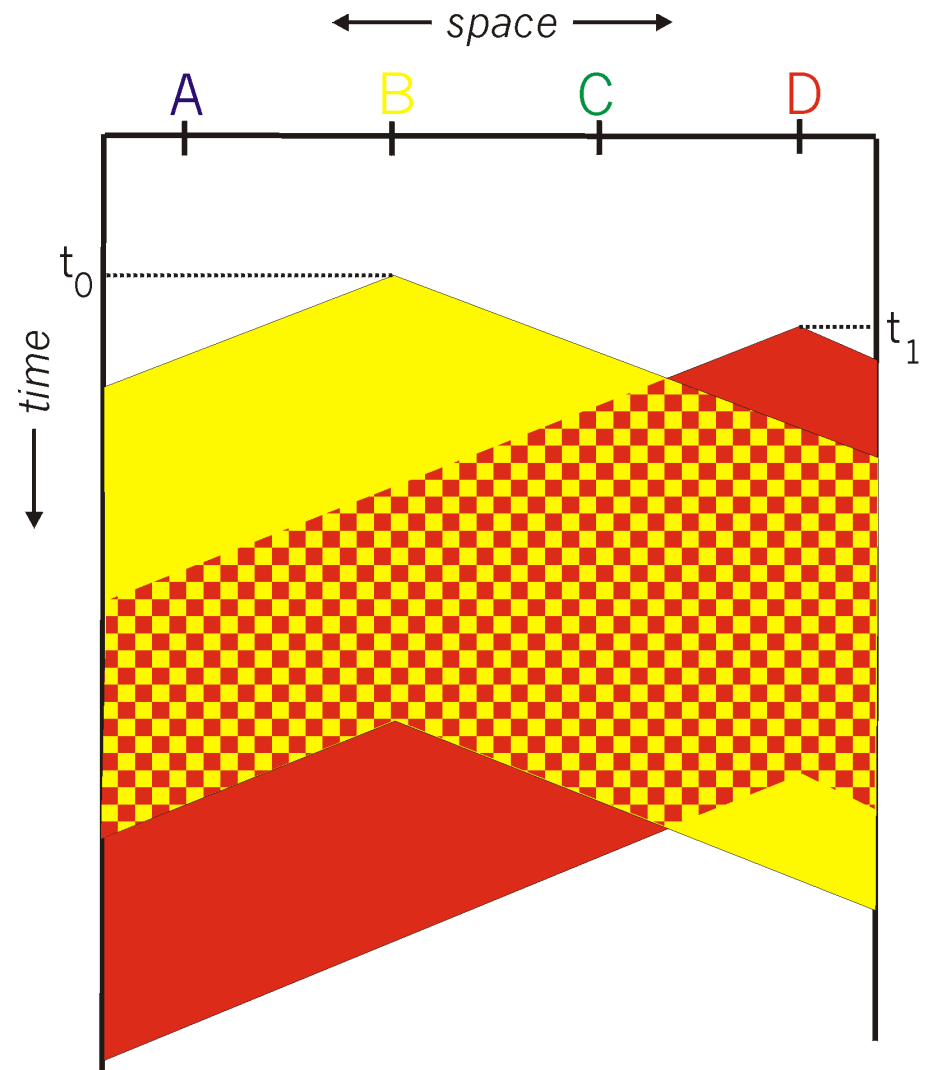


CSMA: Carrier Sense Multiple Access

- Conceived to increase throughput
- Stations listen to the channel before transmitting
 - If channel is free: Transmit Packet
 - If channel is occupied delay transmission
 - 1-persistent CSMA: Immediate transmission on free channel
 - 0-persistent CSMA: Retry after a long random delay
 - p-persistent CSMA:
 - With probability p behaves as 1-persistent
 - With probability $(1-p)$ behaves as 0-persistent

CSMA: collisions???

- May happen due to propagation delay
- Transmission time is entirely wasted
- Distance between stations plays a fundamental role in the collision probability

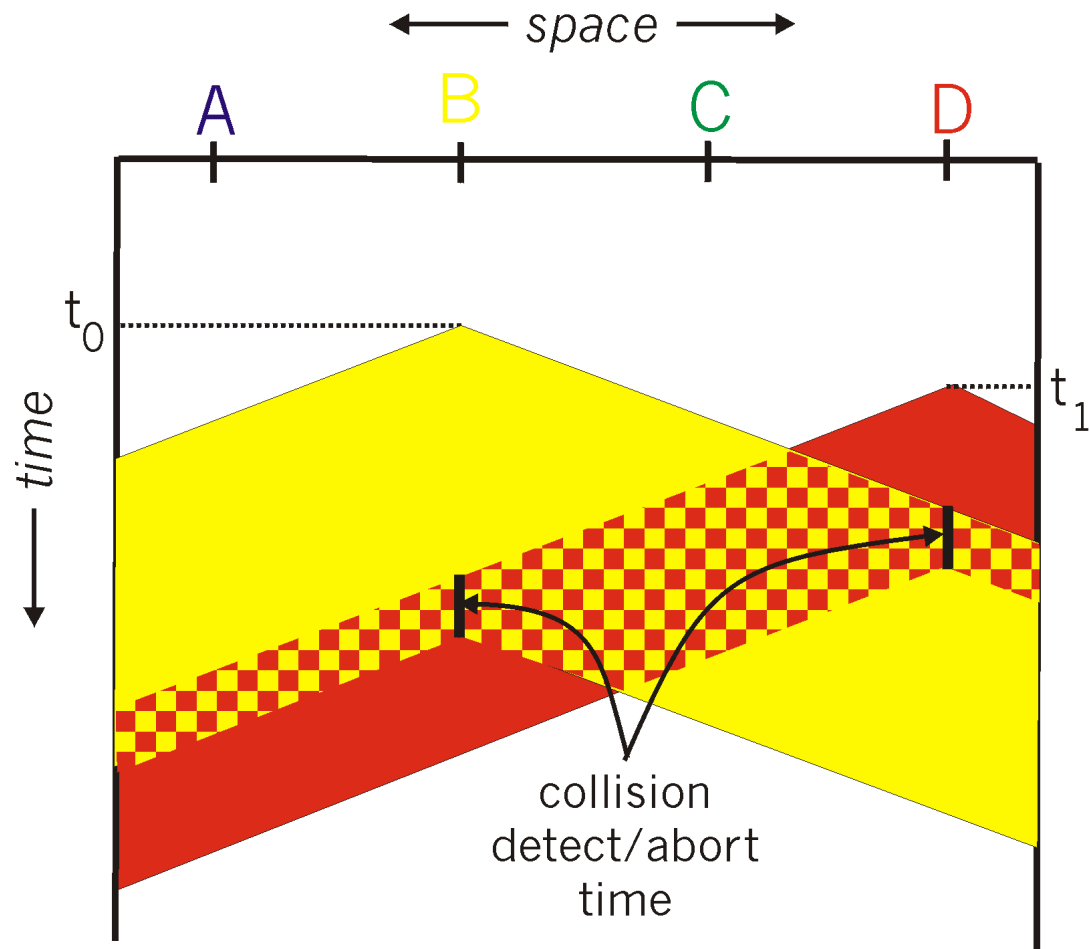




CSMA/CD (Collision Detection)

- CSMA/CD Builds on top of CSMA
 - Try to understand when a collision occurs and stop transmission
 - Wasted time is reduced
- Collision detection:
 - Easy on wired LANs: Simple power measurement with threshold comparison between transmitted and received power
 - Practically impossible in WLANs
 - Half Duplex
 - Power fluctuation/Power attenuation

CSMA/CD collision detection





CSMA/CD: Performances

- The fundamental parameter is end to end propagation delay
 - More precisely what counts is the ration between the (average) packet transmission time and the e-t-e propagation delay
- Performances are optimal for small, slow (in terms of transmission speed) LANs with large packet dimension
- There is a minimum packet size required to identify collisions



CSMA/CD: Performances

- The 1-persistent behavior is normally preferred for the low access delay at low loads
- The protocol is instable, just like any contention based protocol without “corrections”
 - Exponential backoff on transmissions to induce stability
 - Dimension and No. of stations limits adapted to backoff
- It's not easy to introduce traffic differentiation and priority
- **This is Ethernet !!**



Protocols and Architectures

understand the “world” we’re moving in



Architectures & Protocols

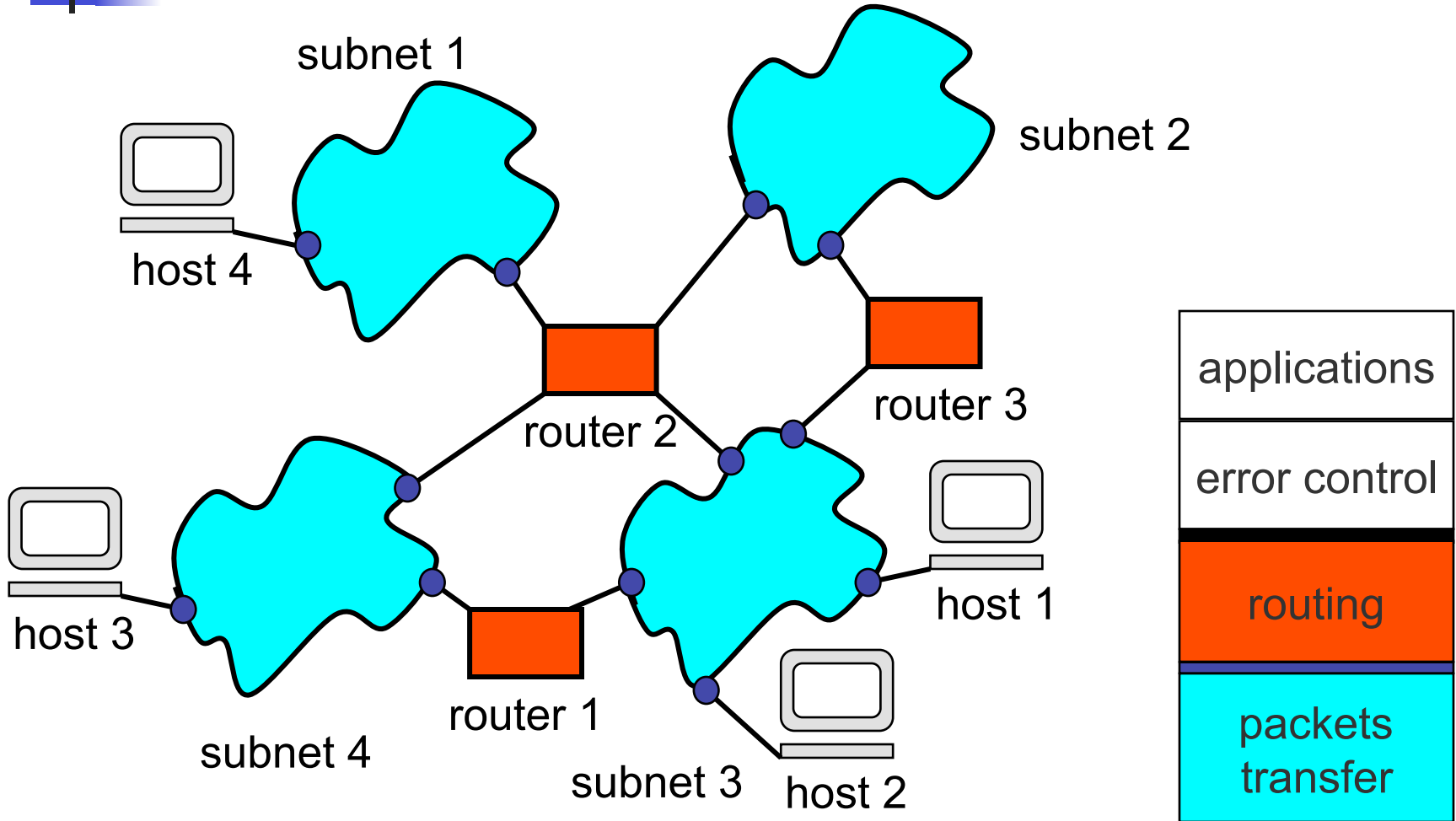
- ITU-T & ISO definition:
 - **Communication**: information transfer following predefined conventions
- Communication require cooperation
- An abstract description of communication among two or more users requires a
reference model
- The highest level abstraction of a reference model defines a
network architecture



Network (Protocol) Architecture

- A network architecture defines the *objects* and *entities* used to describe:
 - The communication process
 - Relationships among these objects/entities
 - Functions required for communication
 - Organization modes of these functions
- Modern communication architectures are layered
 - Easier design
 - Easier management
 - Easier standardization and greater modularity
 - Function separation

Function separation: Internet





Protocols

- ITU-T & ISO definition (once again!)
 - formal description of the procedures adopted to ensure communication among two or more objects **at the same hierarchical level**
- Protocol definition (design):
 - **Semantic**
 - **The ensemble** of commands and responses
 - **Syntax**
 - **The structure** of commands and responses
 - **Timing**
 - **Temporal sequences** of commands and responses (procedures)



Protocols

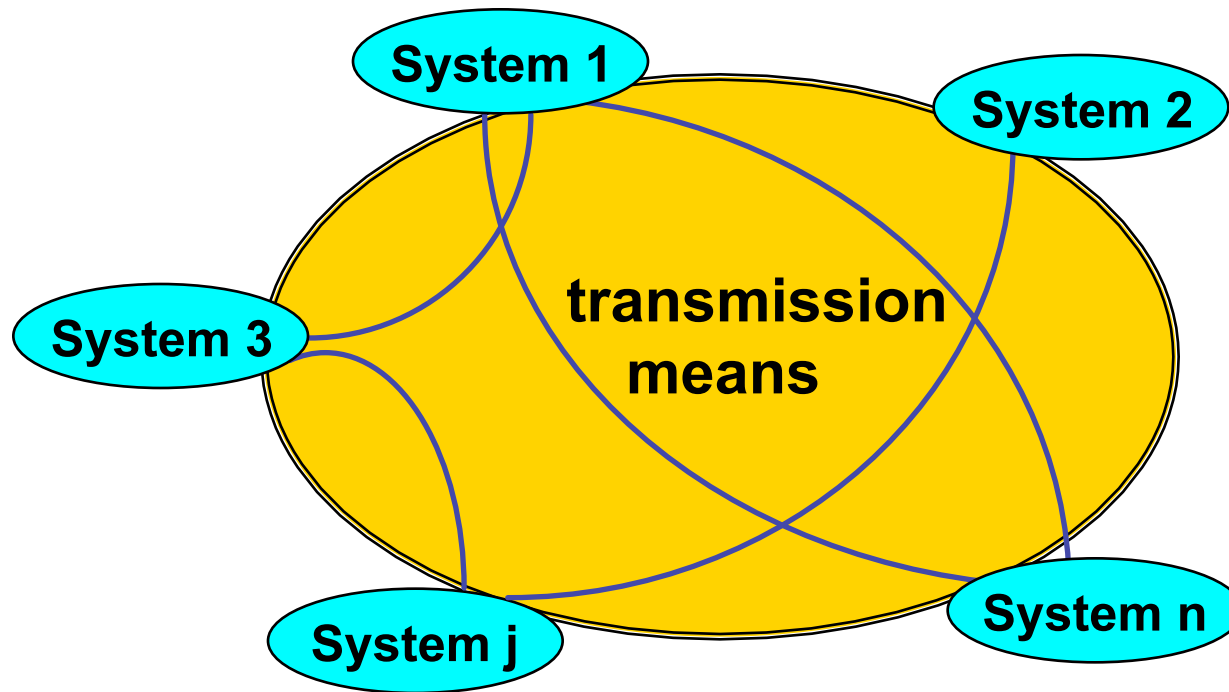
- In other words:
 - Semantics
 - Algorithms
 - Syntax
 - Formats
 - Timing
 - State machines and sequential diagrams



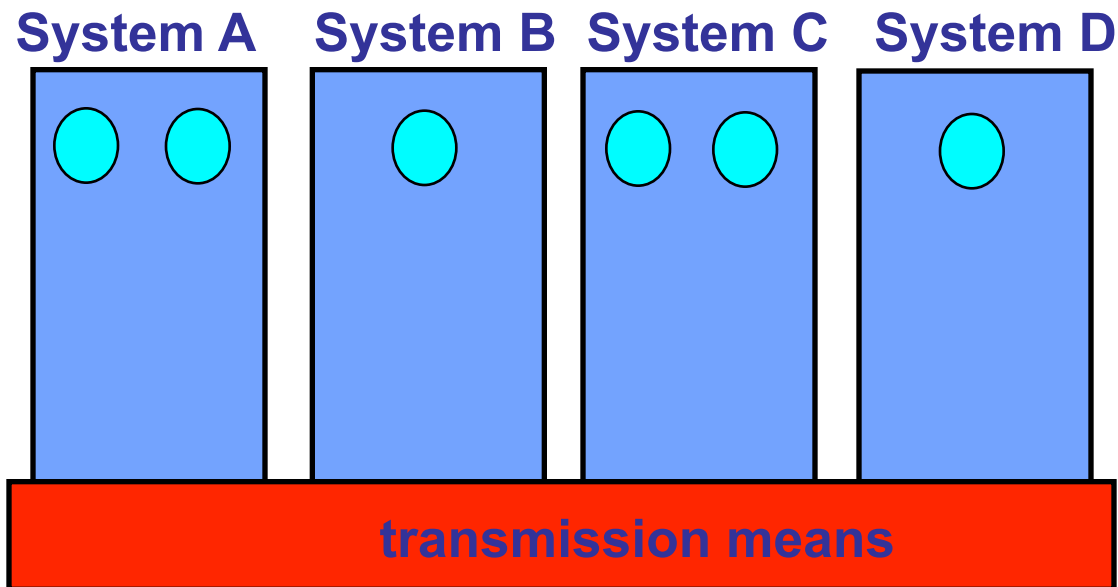
ISO/OSI reference model

- (Open System Interconnection) is today the basis (sometimes disregarded for ignorance and sometimes questioned for philosophy) for any protocol design, from the physical layer to the application layer ... to overlay structures such as web-services and peer-to-peer systems
- We are talking about **principles**, not the detailed functionalities and not even the detailed layers, objects, entities

OSI Reference Model

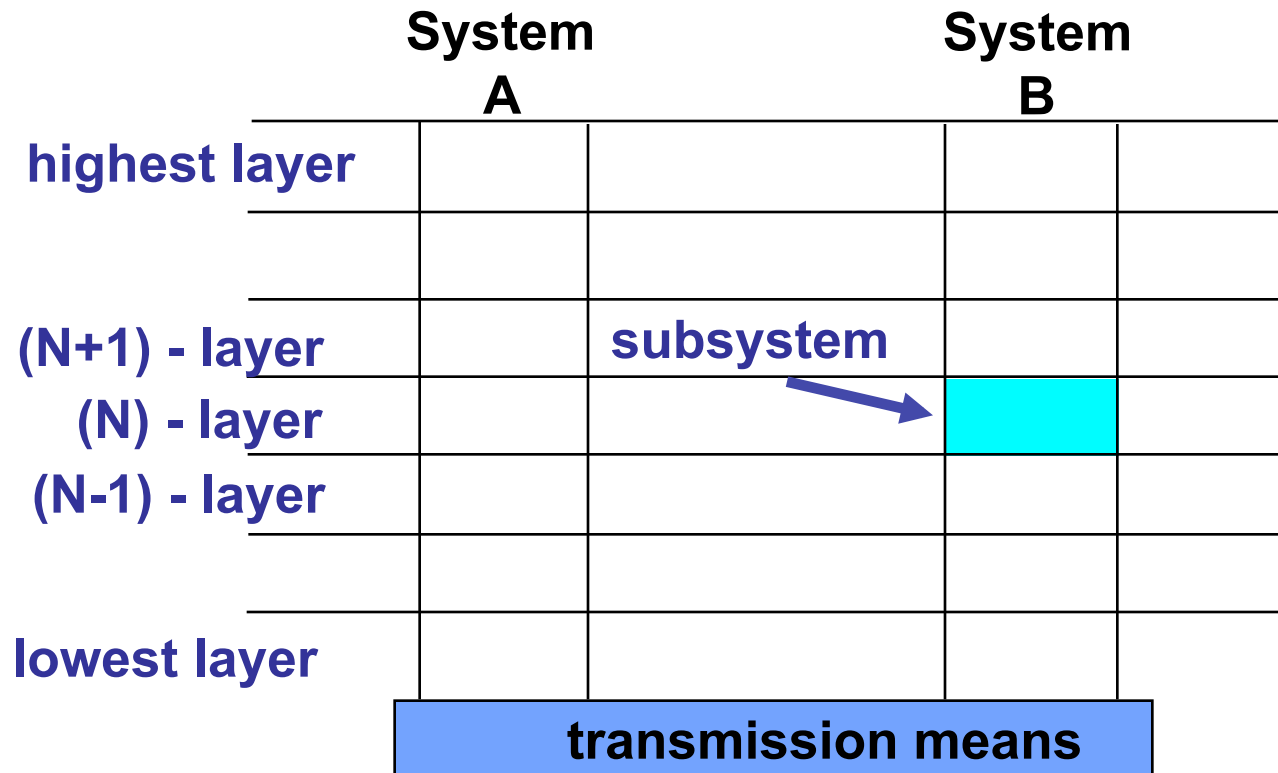


OSI Reference Model



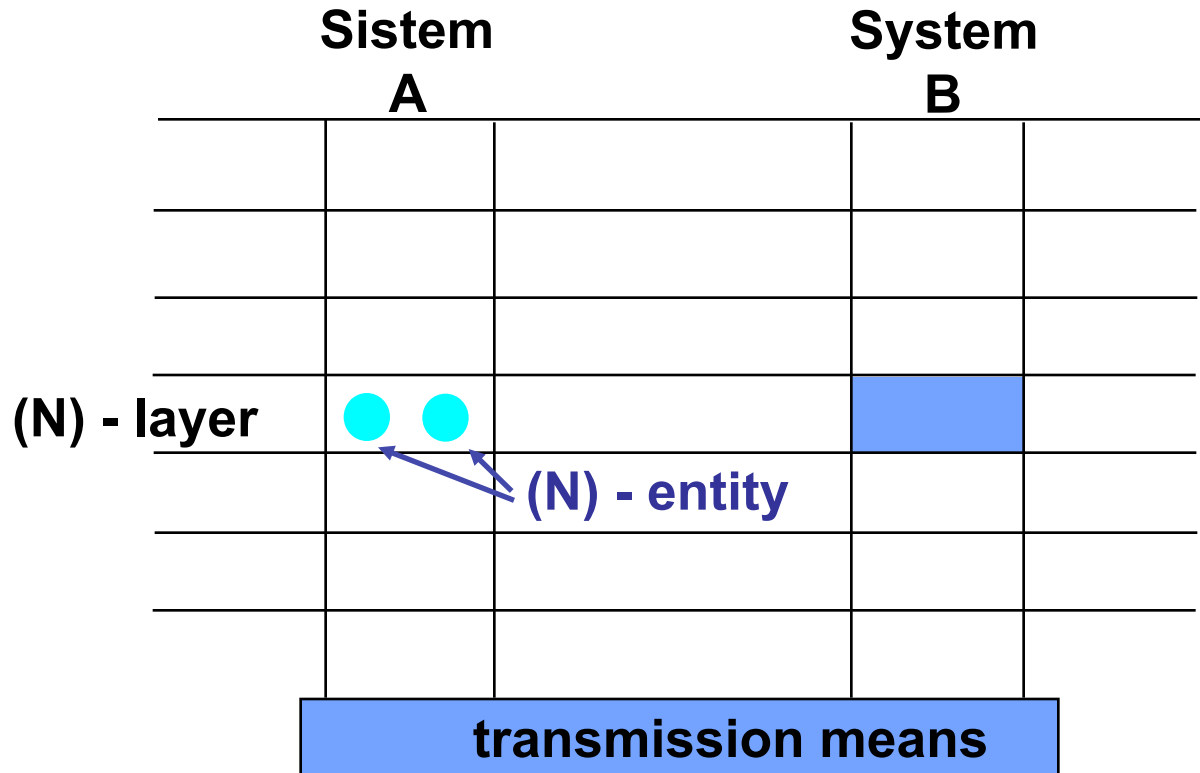
● application processes

Layers



Entities

- Active elements in a sub-systems
- Fulfill layer operations
- Interact with peer entities



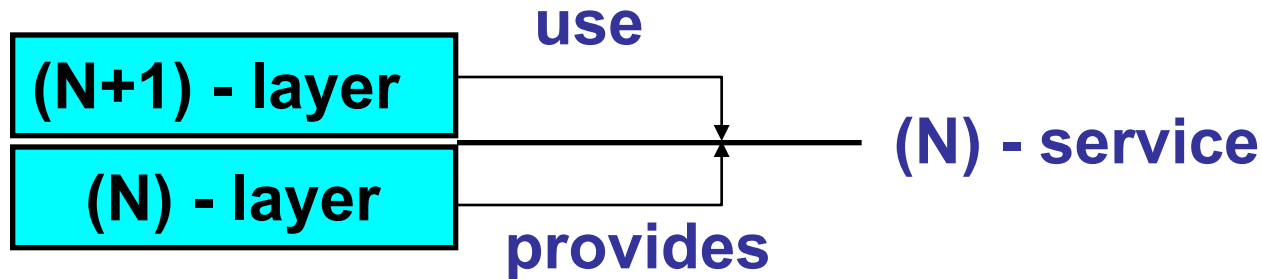


Layering

- Each Layer (N)
 - Provides services to the upper layer (N+1)
 - using
 - (N-1) Services
 - Own functions
- Identify:
 - service providers
 - service users
 - SAP (Service Access Points)

Services

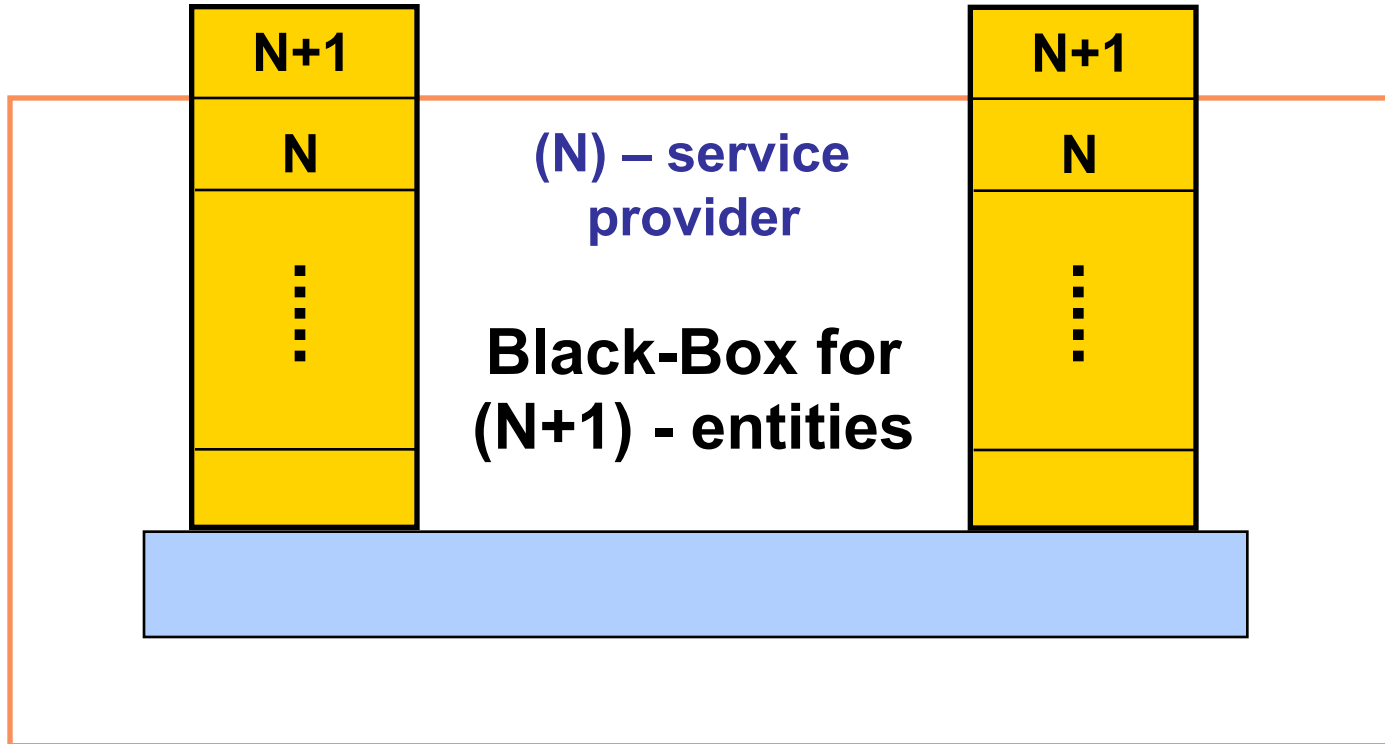
- N-layer users –(N+1) – entities– cooperate and communicate using the (N)-service provided by the (N)-service provider



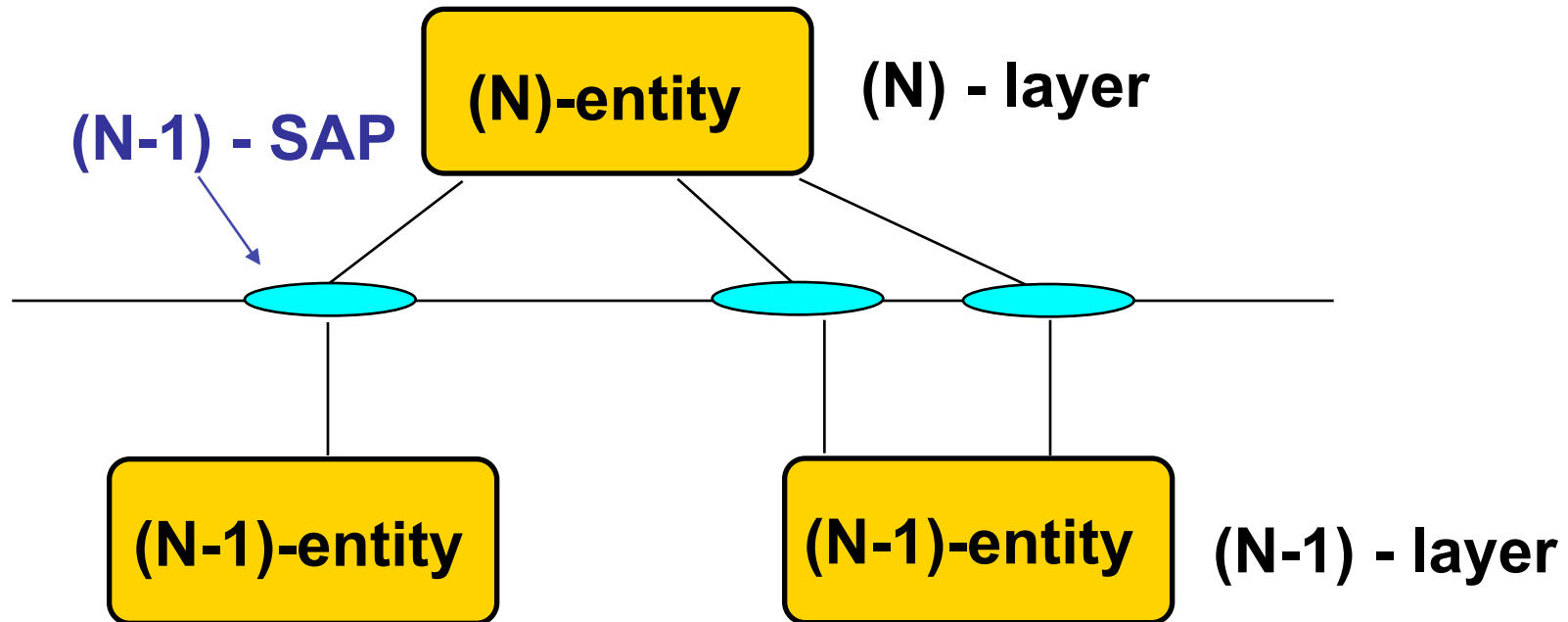
- In TCP/IP this are the "socket" between application layer protocols and TCP/UDP

Services

(N) - service

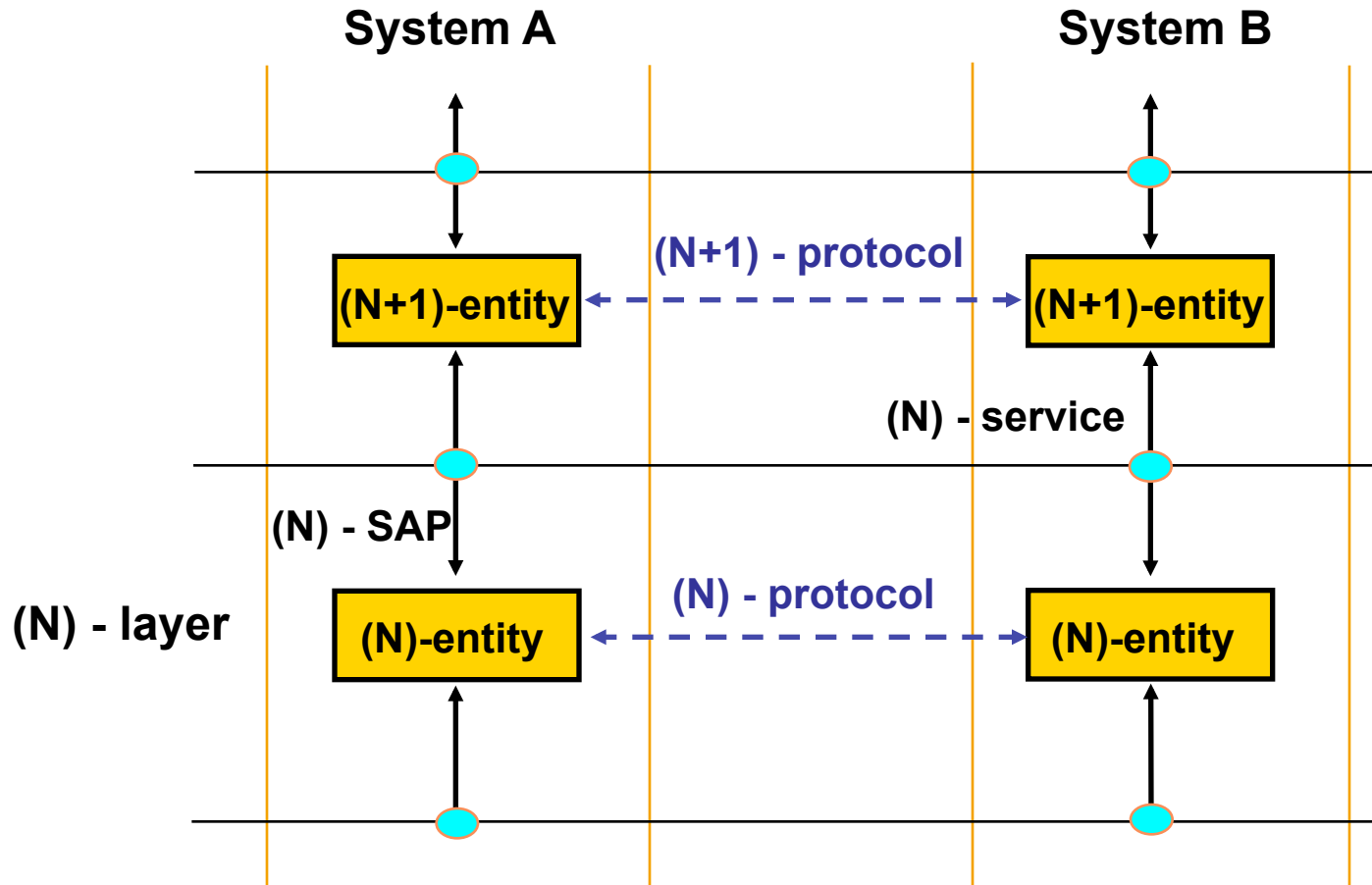


SAPs

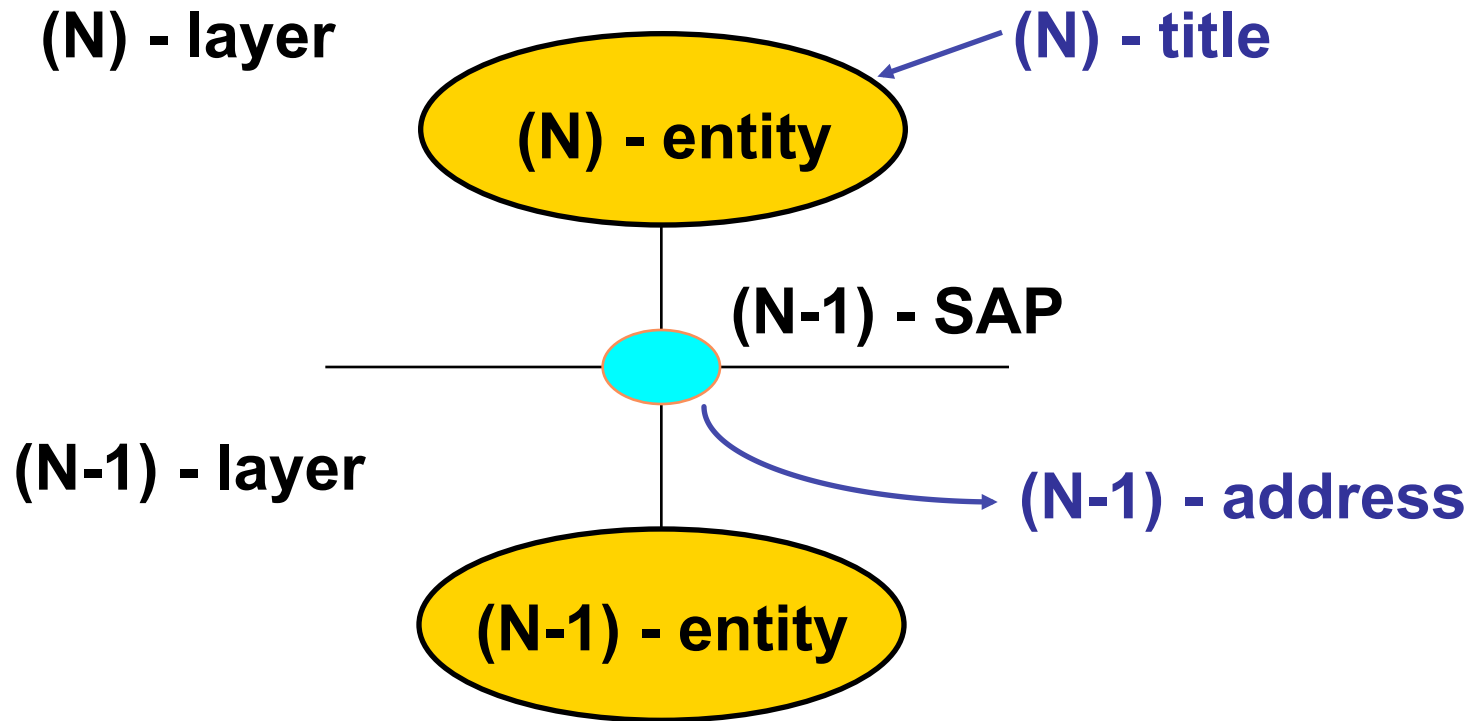


In Internet we have many different names for SAPs, from sockets to buffer to simply c-functions non formally named (e.g., the "ethernet" interface of Linux kernels)

Protocols



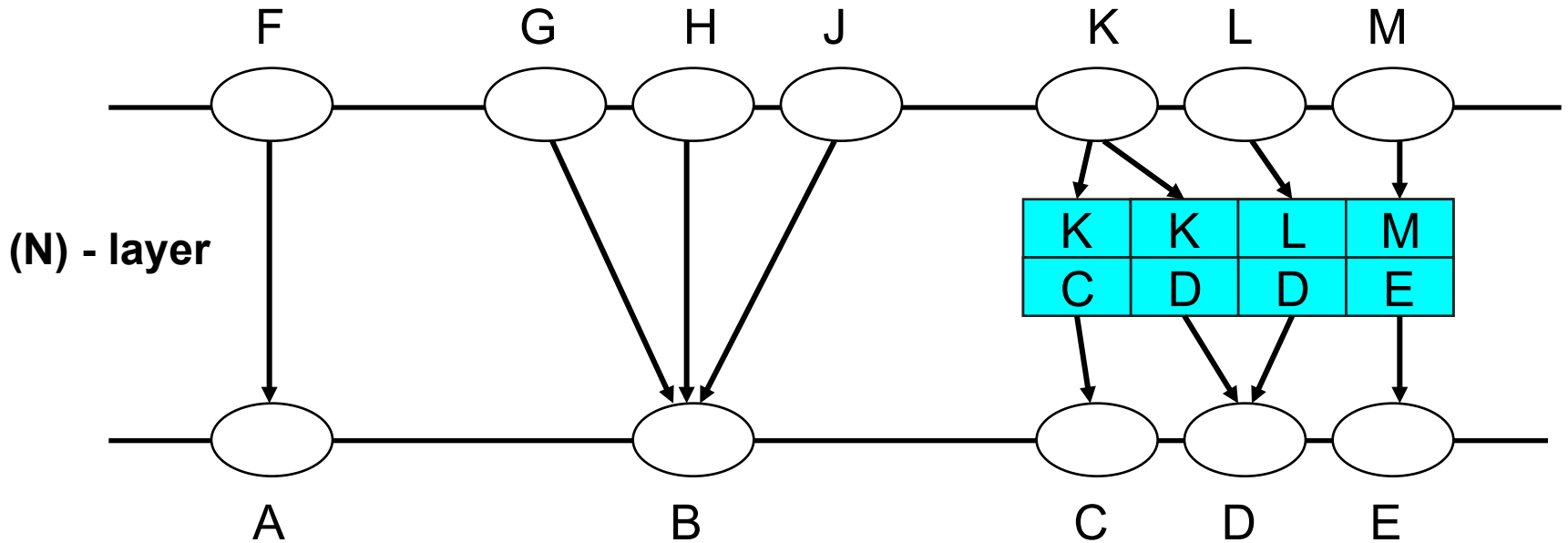
Protocol "addresses"



In TCP/IP addresses are named "port", "protocol", depending on the layers

Notice the differences/similarities with IP-addresses

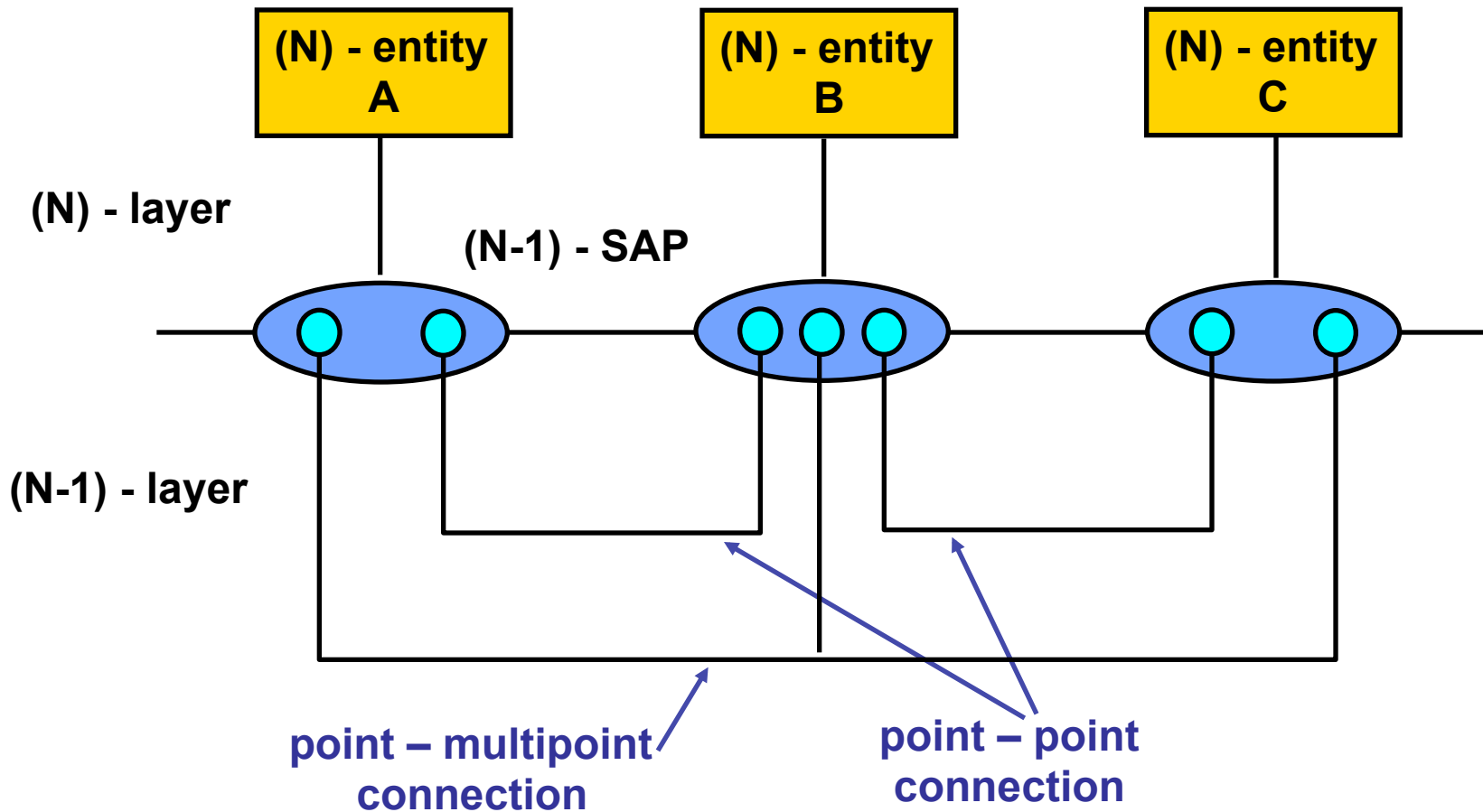
Mapping Types



one-to-one **hierarchical**

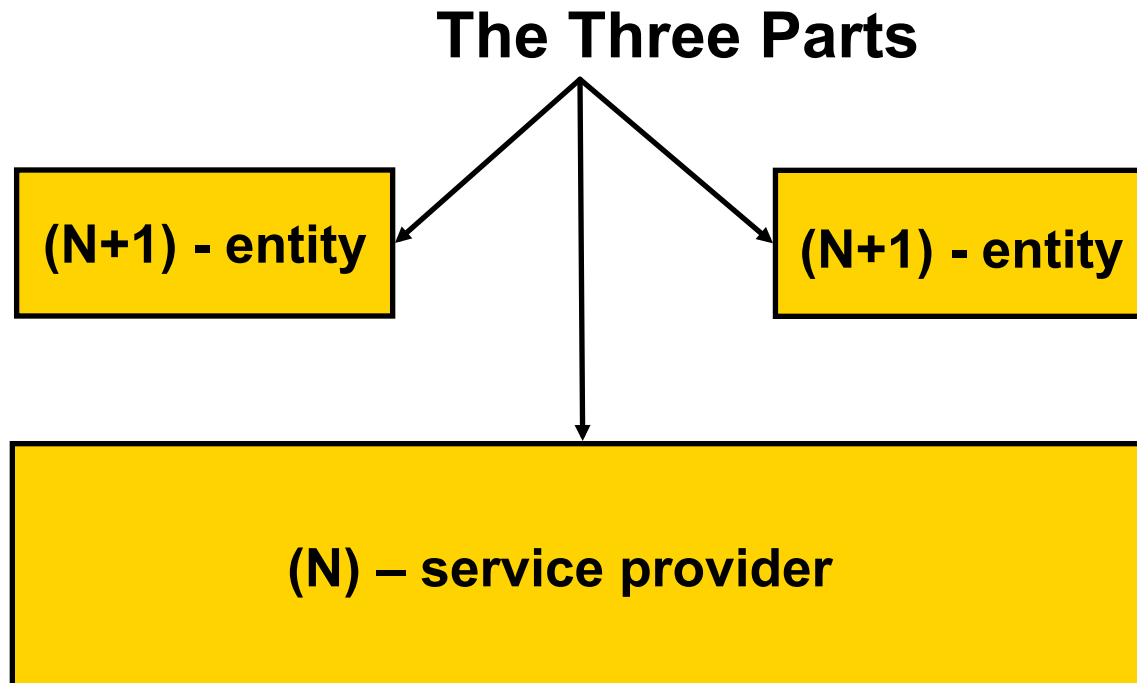
tabular

Connections



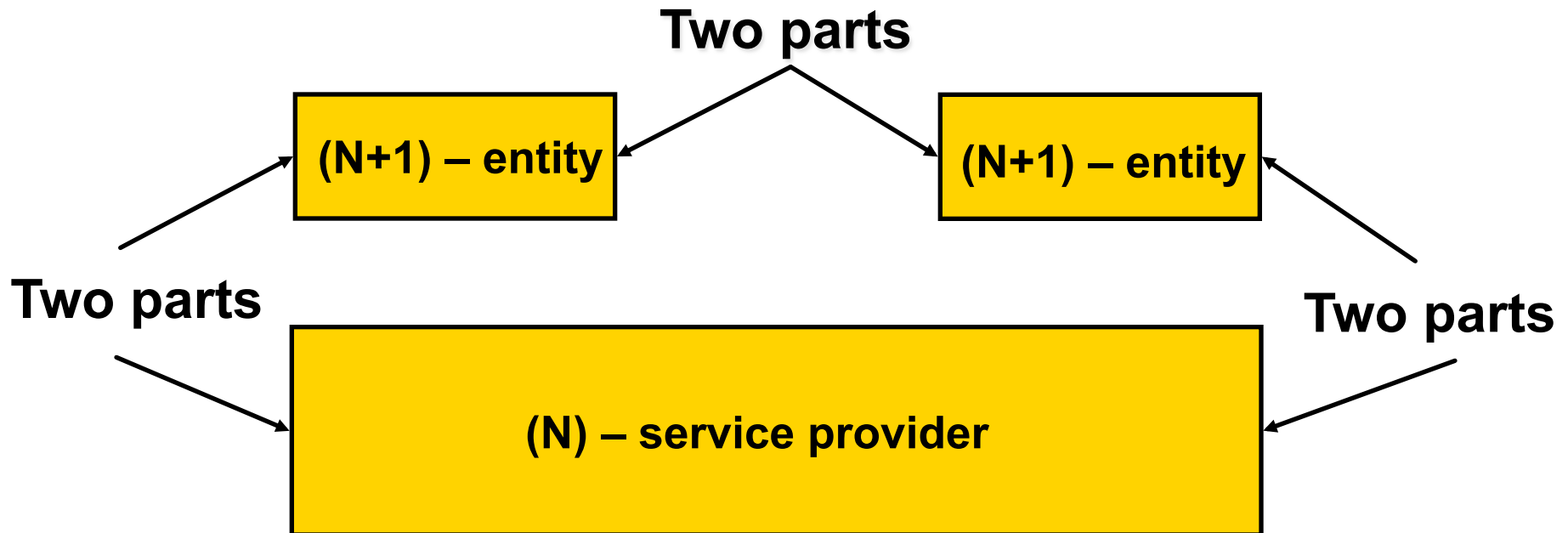
Agreements

Three parts agreement: connection oriented communications



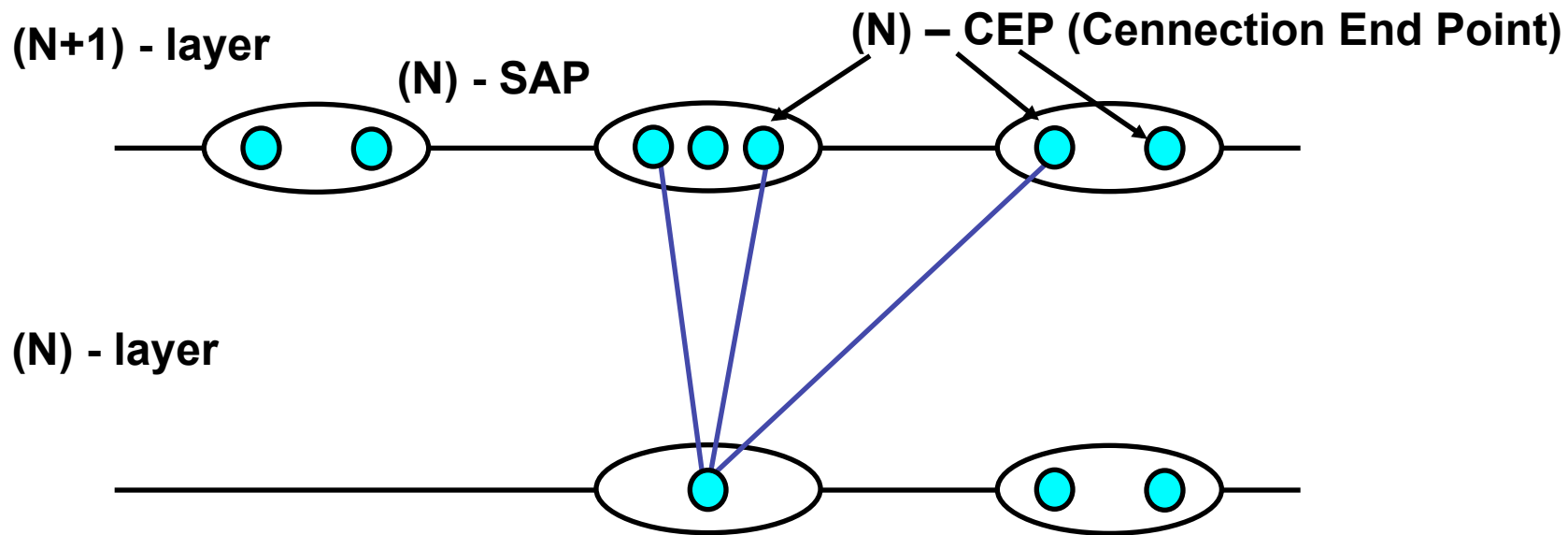
Agreements

Two parts agreement: connectionless communications



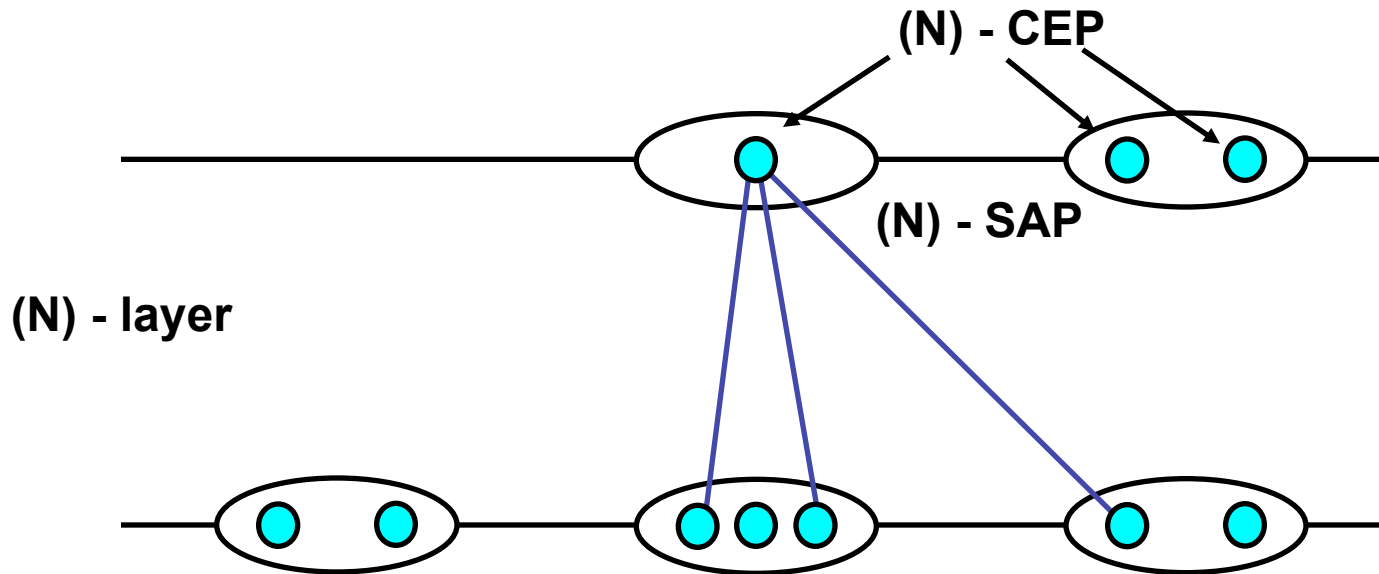
Connections

- Multiplexing (N) – connections onto a (N-1) – connection

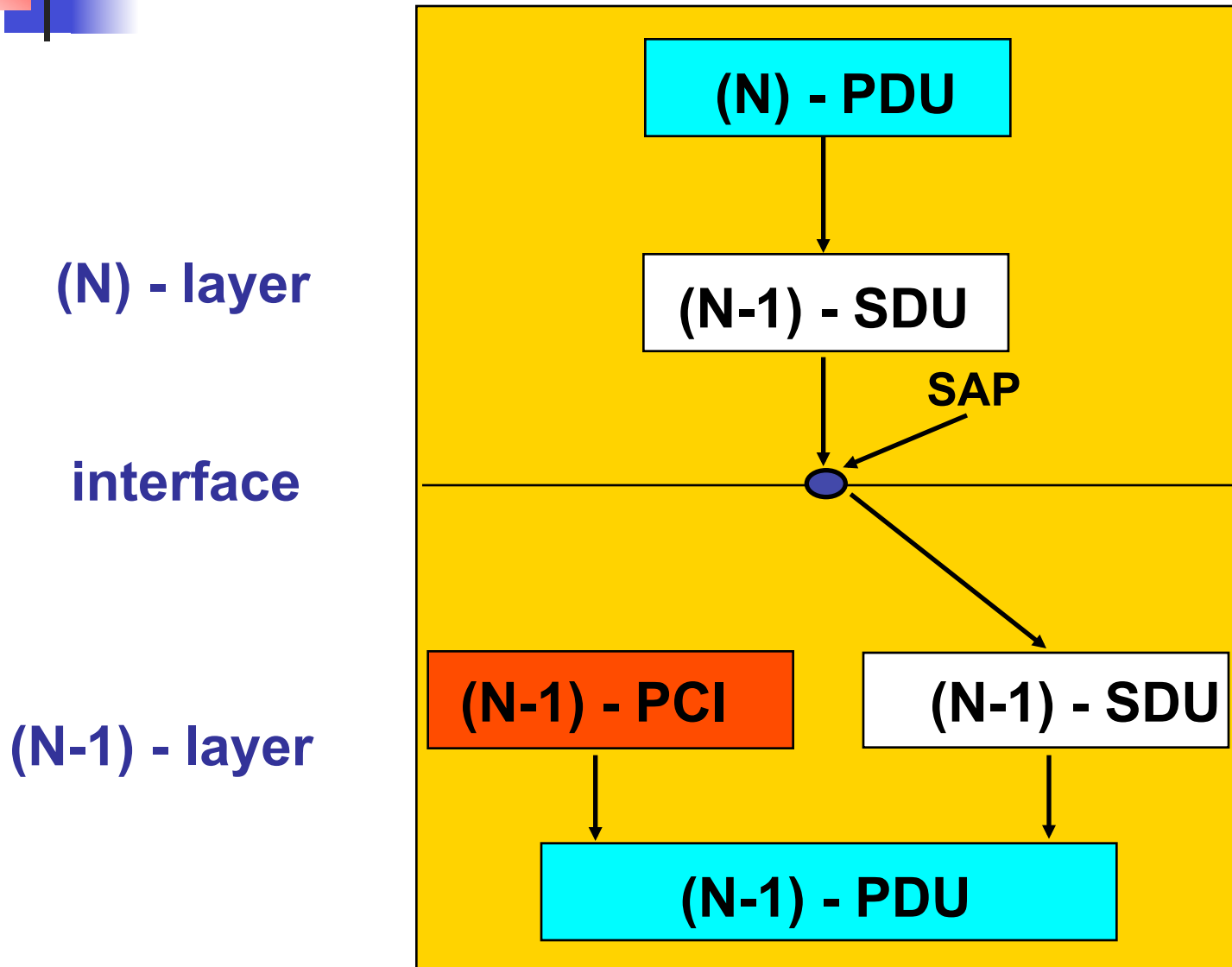


Connections

- (N) – connection splitting onto multiple (N-1) – connections



PDU Formation



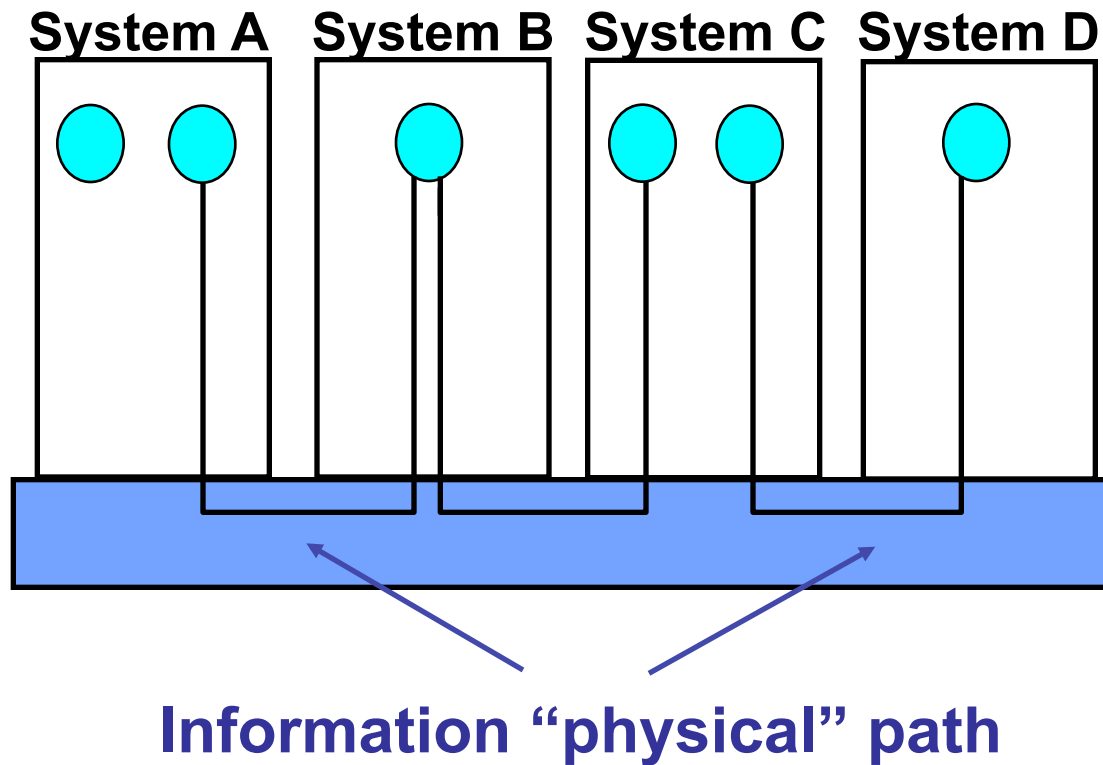


PDU Formation

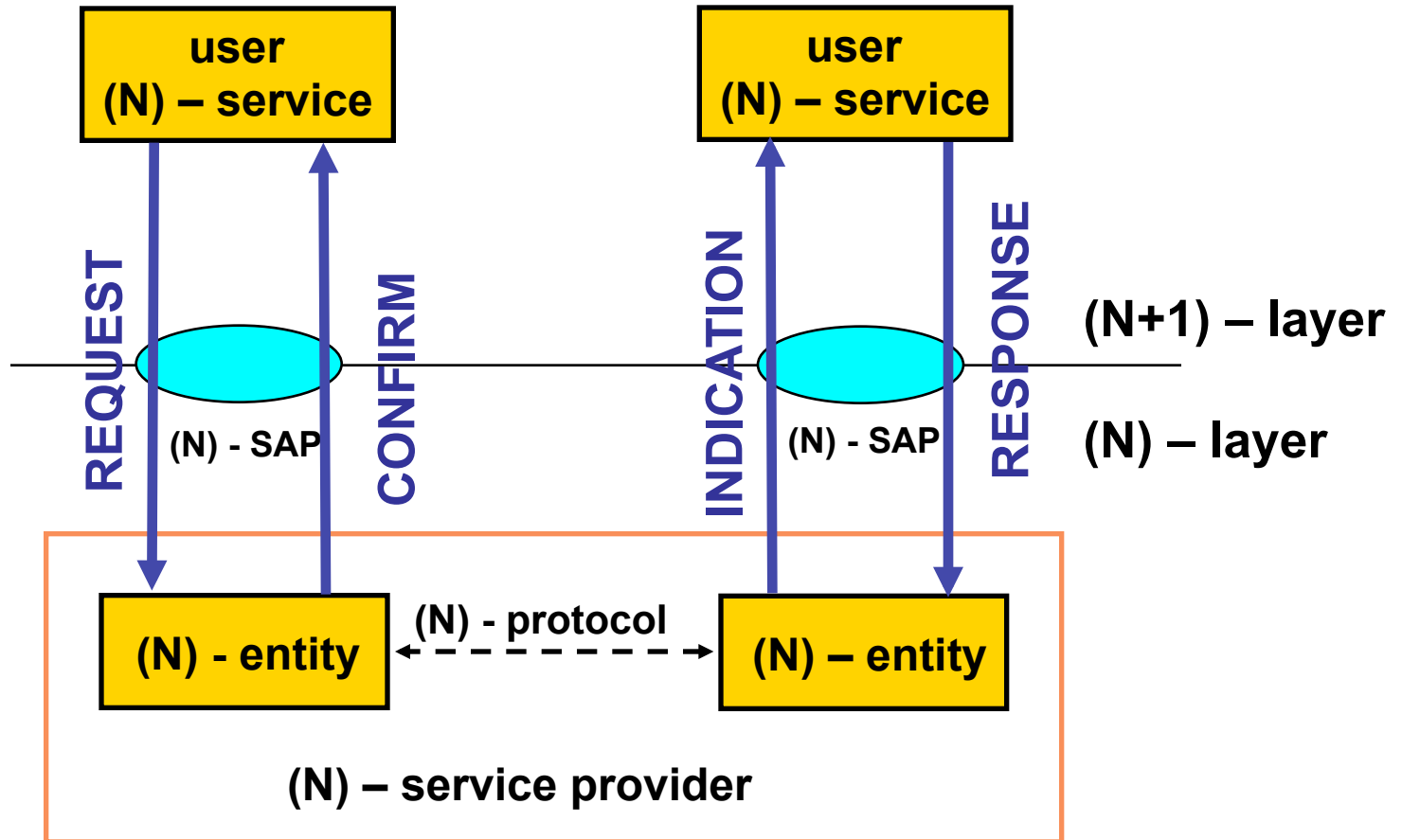
- Data Units can be
 - segmented
 - concatenated
- Segmentation may follow two “paths”
 - Building more (N) - PDUs from one (N) – SDU
 - Generating more (N-1) - SDUs from one (N) - PDU
- Similarly for concatenation

- Often both processes are called segmentation for the sake of brevity

Information Transfer

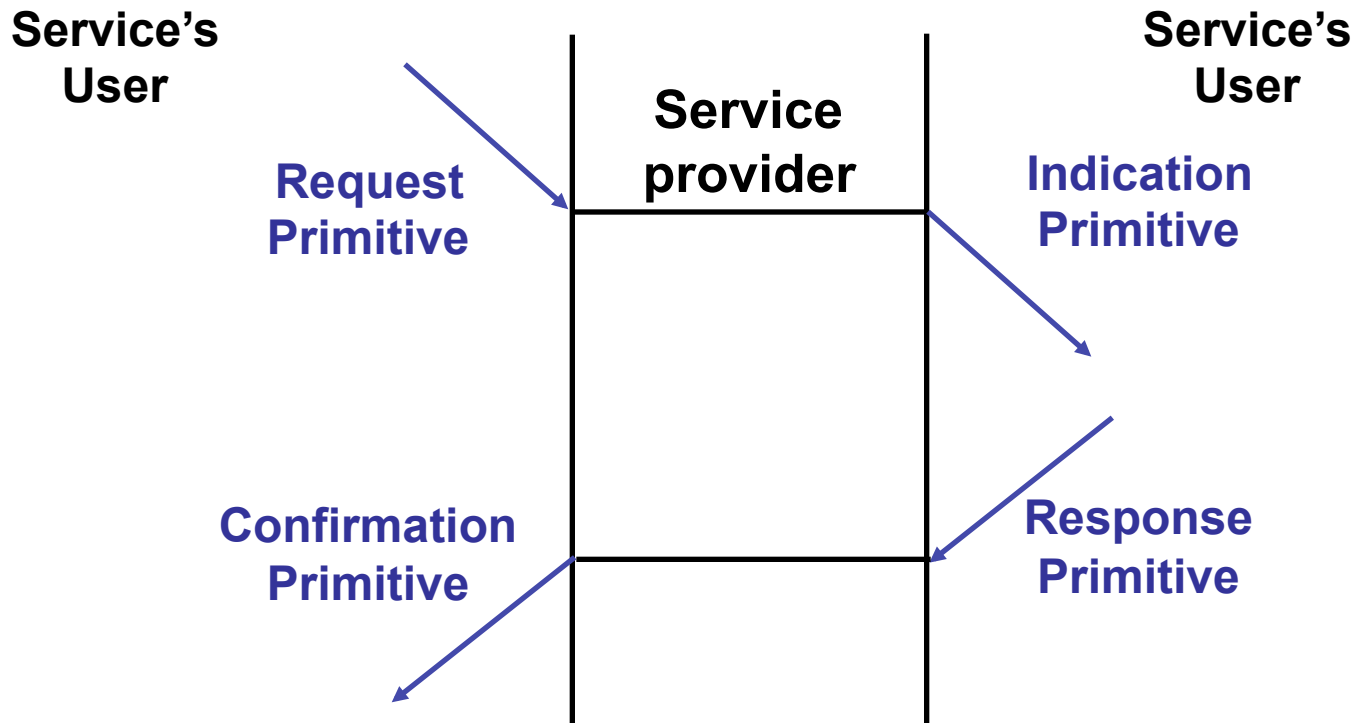


Primitives



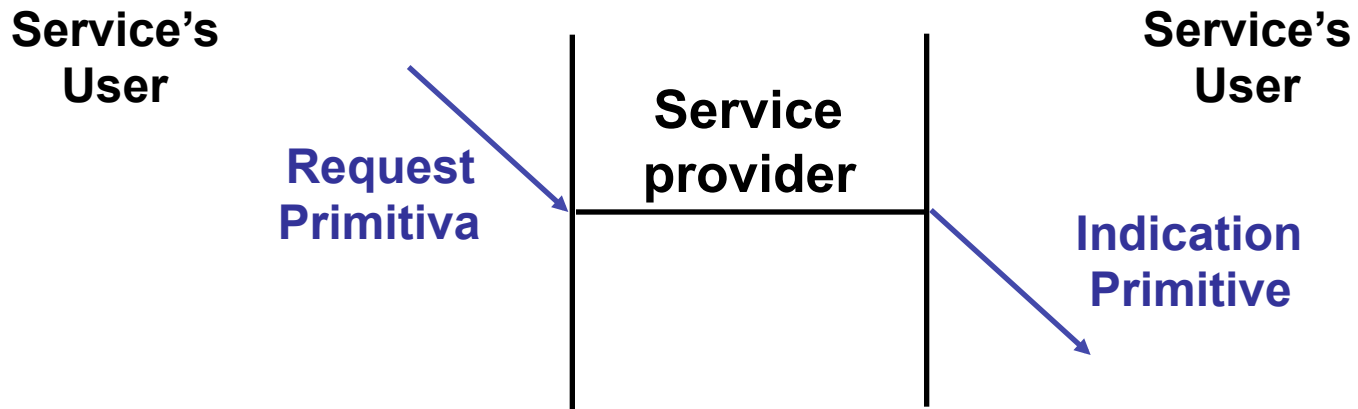
Primitives' Use

Confirmed Service



Primitives' Use

Un-Confirmed Service



Primitives' Use

Service Provider Initiated

**Service's
User**

**Indication
Primitive**



**Service
provider**

Indication Primitive



**Service's
User**



Nomadic Communications & WLANs

characterized by LAN-like wireless access
typically use Internet upper layers
requires some means to handle portability and (sometimes)
local mobility



LAN Protocols

- Standardization process started in the '80s by IEEE 802 project:
 - ✓ 802.1: LAN *Internetworking*
 - ✓ 802.2: LLC Sublayer
 - ✓ 802.3: CSMA/CD: *Ethernet* is a small (1-bit in the header) variation of 802.3
 - ✓ 802.4: *Token Bus*
 - ✓ 802.5: *Token Ring*
 - ✓ 802.6: DQDB (for MANs)



LAN Protocols

- Work is still going on in many technical committees and new committees are founded every year (or close to):

- ✓ 802.7: Broadband Technical Advisory Group
- ✓ 802.8: Fiber-Optic Technical Advisory Group
- ✓ 802.9: Integrated Data and Voice Networks
- ✓ 802.10: Network Security
- ✓ **802.11: Wireless Networks (/a/b/g/h/f/s/n/p/...)**
- ✓ 802.12: 100base VG
- ✓ 802.13: 100base X
- ✓ **802.15: Personal Area Networks (.1 [Bluetooth]4 (ZigBee))**
- ✓ **802.16: Wireless MAN (WiMax & Co.)**
- ✓ ...